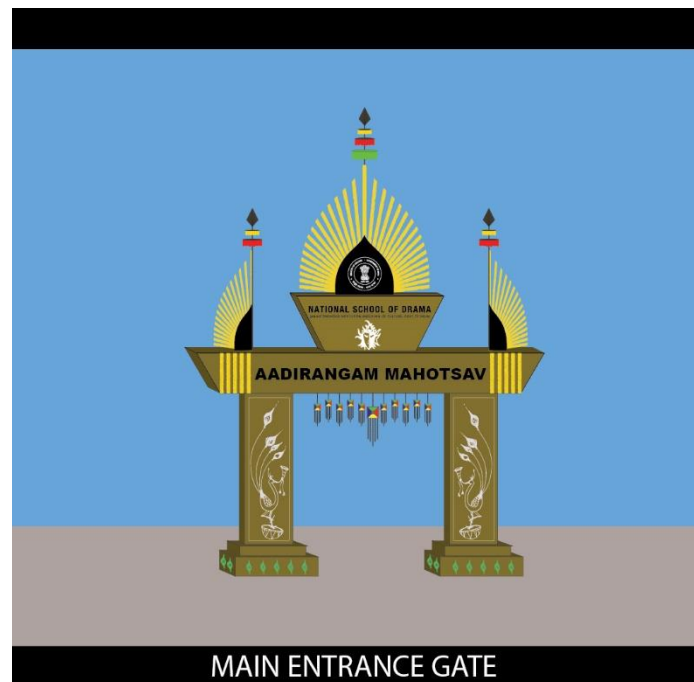


Aadirang Mahotsav 2018, Goa

May, 2018.

Ambiance design and other designs, size Quantity and material details.

1. Main Gate (Box Shape)



A) Size

- a. Top of gate box – 2- Qty.
 - i. Upper box bottom size – 6 X 2 X 4 (Ft)
 - ii. Upper box top - 8 X 2 (Ft)
- b. Top of gate box – 2 Qty.
 - i. Lower box bottom size – 20 X 2 X 3 (Ft)
 - ii. Lower box top – 24 X 2 (Ft)
- c. Pillar – 4 Qty.
 - i. Pillar size – 3 X 2 X 10 (Ft)
 - ii. Pillar base size – 2'.6" X 3'.6" X 2'.6" (Ft)

B) Quantity

- 02 (Two)

C) Ornament

- a. Bamboo Peacock Peace – 6X8X6" (Ft) – 2 Qty.
- b. Three festival colour Tree - 6 Qty.
- c. Half Peacock Peace – 3X6X6" – 4 Qty.
- d. 3D Pillar Carving Work In MDF
- e. Flower Decoration on the gate.
- f. Border frame for whole gate
- g. 3D art work on pillar
- h. Carving work in MDF
 - i. 2 NSD logo
 - ii. Title of festival

iii. Organisers name.

D) Material

- a. Solid Basic metal structure
- b. Water Proof Ply
- c. Art work with Bamboo
- d. POP, wood, metal & Sea Sand.

2. Mini Gate (Box Shape)



A) Size

- a. Top of Gate Box – 1
 - i. Upper Box Bottom size – 3 X 18 inch X3 (Ft)
 - ii. Upper box top size – 5 X 18 inch (Ft)
- b. Top of gate box – 2
 - i. Lower box bottom size – 12 X 2 X 2.6 (Ft)
 - ii. Lower Box Top Size – 15 X 2 X 2.6 (Ft)
- c. Pillar – 4 Qty.
 - i. Pillar size – 2 X 2 X 8 (Ft)
 - ii. Pillar base size – 2'.6" X 2'.6" X 1'.6" (Ft)
- d. Back Wall Frame 7x10 (Ft) – 4 Qty.
- e. **Quantity - 6 Qty**

B) Ornament

- a. Bamboo Peacock Peace – 6X8X6 (Ft) – 6 Qty.
- b. Three festival colour Tree – 20 Qty.
- c. Half Peacock Peace – 3X6X6 – 12 Qty.
- d. 3D Piller Carving Work In MDF
- e. Flower Decoration on the gate.

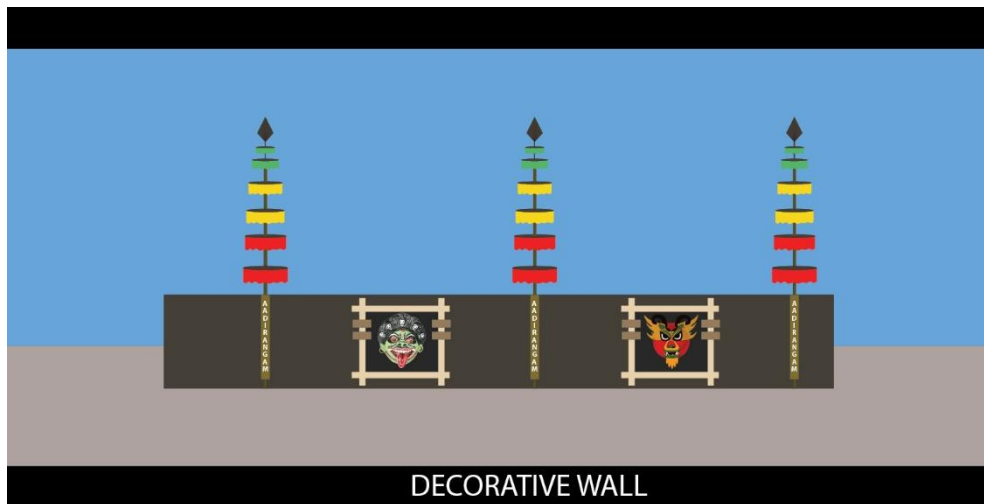
- f. Border frame for whole gate
- g. Carving work in MDF
 - i. 2 NSD logo
 - ii. Title of festival
 - iii. Organisers name.

C) Material

- a. Solid basic metal structure
- b. Water proof ply
- c. Art work with bamboo
- d. Pop, wood, sand and metal

3. Decorative Wall

(Concept – Indian tribal Masks)



A) Wall Size – 8 X 850 (Ft)

(Solid Framing Structure with black cloth mask)

B) Ornament

- a. Art work Painting frame – 8 X 8 (Ft) (50 Qty) (Tribal Mask)
 - 1) Masking Cloth for frame
 - 2) 3D Mask with soil texture
- b. Festival Tree – Tree height – 15 ft. – 100 Qty.
 - 1) Top of tree size – 1 ft. Diameter X 6 inch Height
 - 2) Bottom of Tree size – 2 ft. Diameter X 9 inch Hight

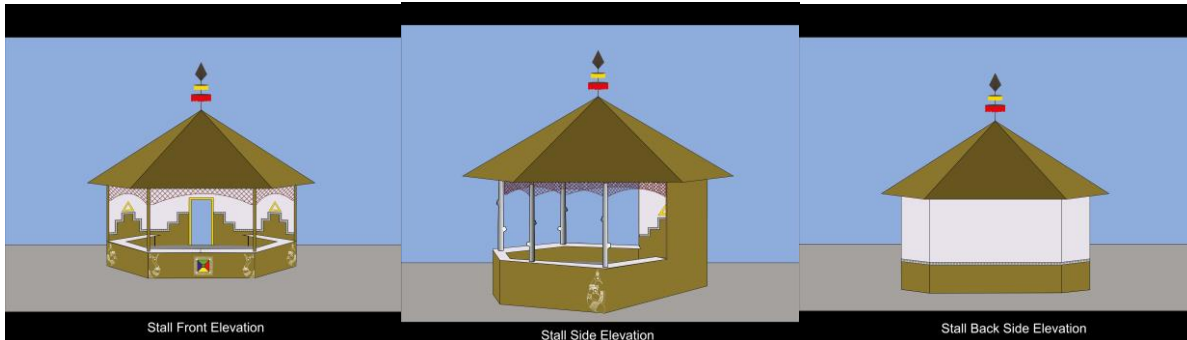
C) Material

- a. Solid basic structure
- b. Water Proof ply
- c. Art work with bamboo
- d. Sea sand.

4. Stall

(Children's play with animal and birds)

Size – 8 X 10 X 15 (Ft) – 31 Qty



A) Size

- a. Stall back wall with door frame – 08 X 10 (Ft)
- b. Stall side wall (Both side) – 04 X 08 (Ft)
- c. Stall counter –
 - i. Left & Right – 02 X 04 X 02 (Ft)
 - ii. Middle – 02 X 06 X 02 (Ft)
- d. Stall roof size – 12 X 12 X 04 (Ft)
- e. Top of the roof –
 - i. 2 Feet Height
 - ii. Festival Tree On Hut

B) Ornament

- a. Wall Painting & carving work

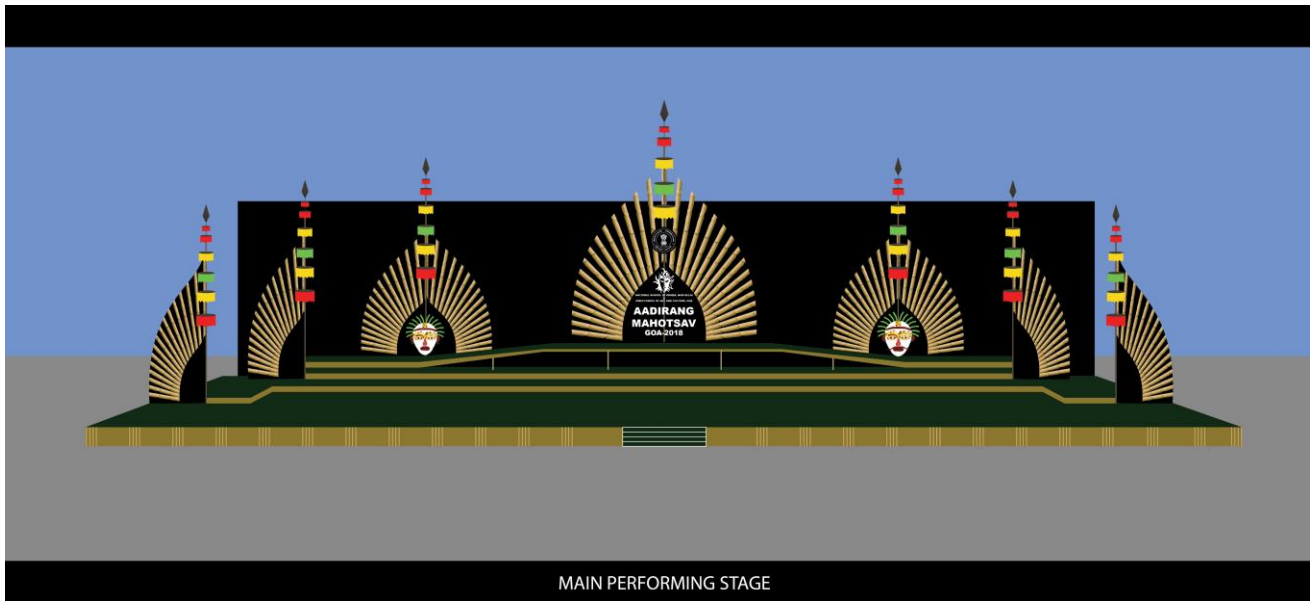
C) Material

- a. Solid basic metal structure
- b. Water proof ply
- c. Bamboo
- d. Sea sand
- e. Grass
- f. Wooden pillar
- g. Lamp

As Per Design

5. Main Performing stage

(Concept – Sawan Ka Mahina Aur Mor)



A) Size

- a. Platform – 6 X 72 X 1 (Ft) - 1 Qty.
- b. Platform – 6 X 72 X 2 (Ft) - 1 Qty.
- c. Platform – 6 X 72 X 3 (Ft) - 1 Qty.
- d. Platform – 36 X 4 (Ft) – 1 Qty.
- e. Platform - 6 X 30 X 2 (Ft) - 1 Qty.
- f. Ramp - 6X10X2 - (Ft) - 2 Qty.
- g. Wing Frame – 6 X 12 X 9” inch – (Ft) - 6 Qty

B) Peacock – Centre Frame – 20 X 25 X 9 Inch – 1 Qty.

C) Small Peacock Frame – 10 X 15 X 9 Inch – 2 Qty.

D) Festival Tree – 12 to 15 Ft High – 20 Qty.

E) Complete Black wall masking around the stage

F) Steps – 8 X 5 X 5 (Ft.)– 5 Qty.

G) Stage – 50 X 80 X 5 (Ft.)

H) Complete carpet masking on stage

I) Back wall truss metal structure – 25 Ft. High from stage and 80 Ft. Length

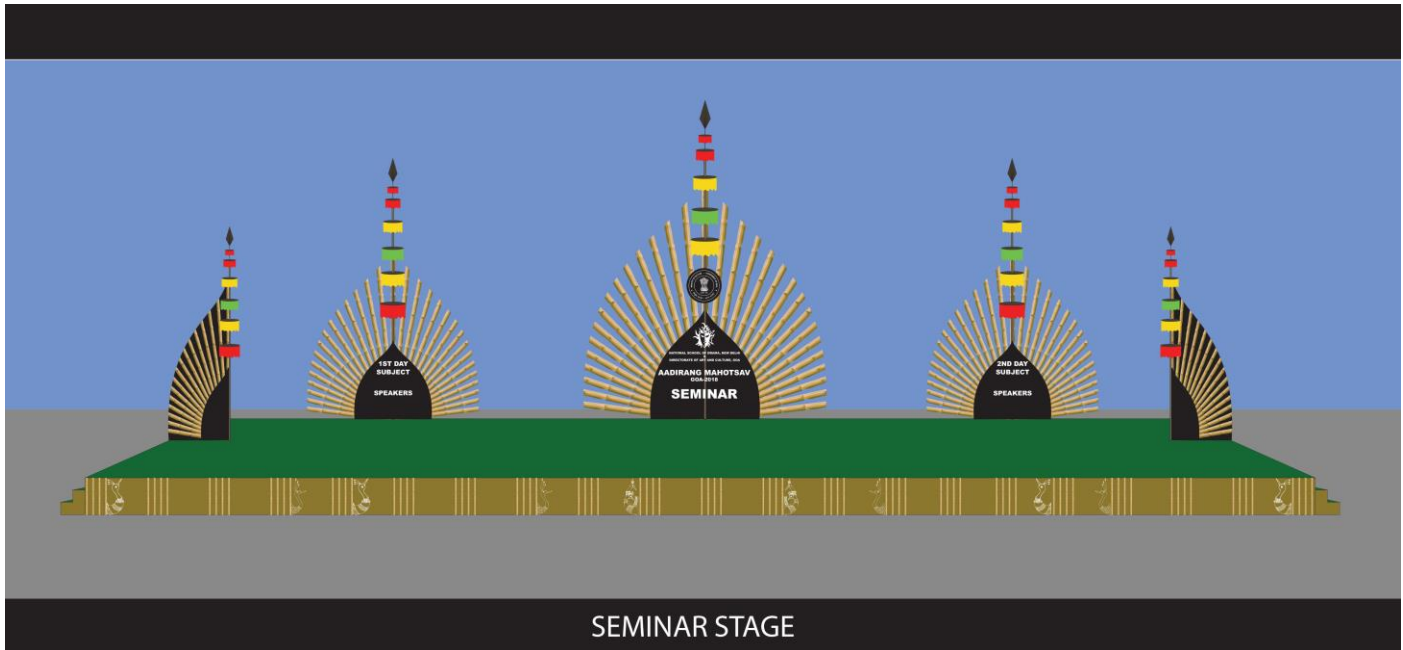
i. Ornament

1. Bamboo Work On Peacock Peace
2. Festival Tree Work with heavy thick Cloth
3. 2 Huge 3D Mask On the Peacock Peace
4. 1 Centre Board In MDF Work
5. Festival Name and small mask in 4 Wings
6. Carving work –
 - a. 2 NSD Logo
 - b. Title of festival
 - c. Organiser’s name

ii. Material

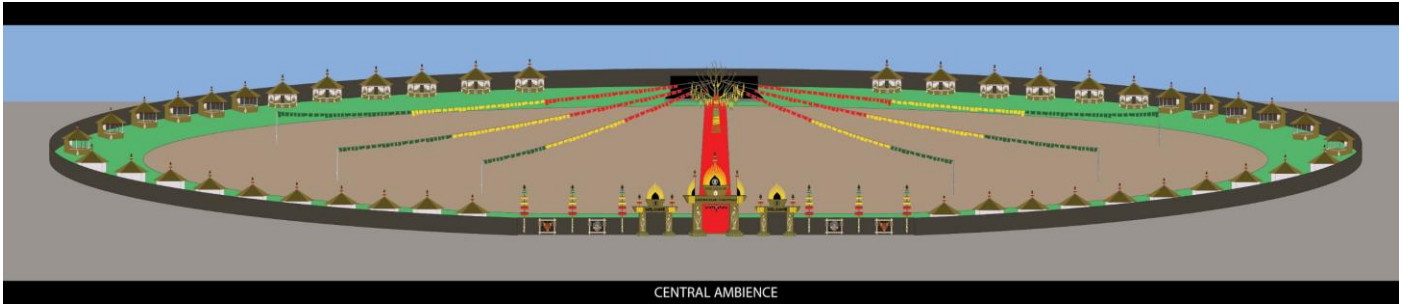
- a. Solid basic metal structure
- b. Water proof ply
- c. Art work with bamboo
- d. Pop, wood, Sand and metal

6. Seminar Stage



- A) Centre Peacock Peace - 8 X 12 X 6" ft 1 Qty.
- B) Small Peacock Peace - 6 X 10 X 6" ft 2 Qty.
- C) Half Peacock Peace - 3 X 10 X 6" ft 4 Qty.
- D) Podium – 2 X 2 X 4 ft
- E) Side Platform – 2 X 6 X 9" ft – 2 Qty.
- F) Centre Platform – 2 X 8 X 18"
- G) Chairs – (Bamboo) - 8 Qty
- H) T-poi – 2 Qty.
- I) Back Drop Frame with cloth – 12 X 24 ft
- J) Ornaments
 - a. Ornaments
 - i. Complete 3D Work front of the Stage (As per Design)
 - ii. Bamboo Work
 - iii. Lettering work (As per design)
 - iv. Flower Belt on podium
 - v. 2 flower pot on T-poi
- K) Material
 - a. Solid basic metal structure
 - b. Water proof ply
 - c. Art work with bamboo
 - d. Sea sand

7. Central Ambiance



- A) Huge Centre Tree with Hanging Lamp – 1
 - B) Hanging Lamp – 100 Qty.
 - C) Flag Colour Belt 60 ft. length – 50 Qty
 - D) Colour flag – 1 X 1

 - E) Material
 - a. Solid metal structure – For Tree Base, Branches, and Lamp
 - b. Cloth Transplant
 - c. Festival Tree
 - d. Colour Flag,Belt – 600 Ft. Length – 50 Qty.
- As per design and requirement

8. Festival memento



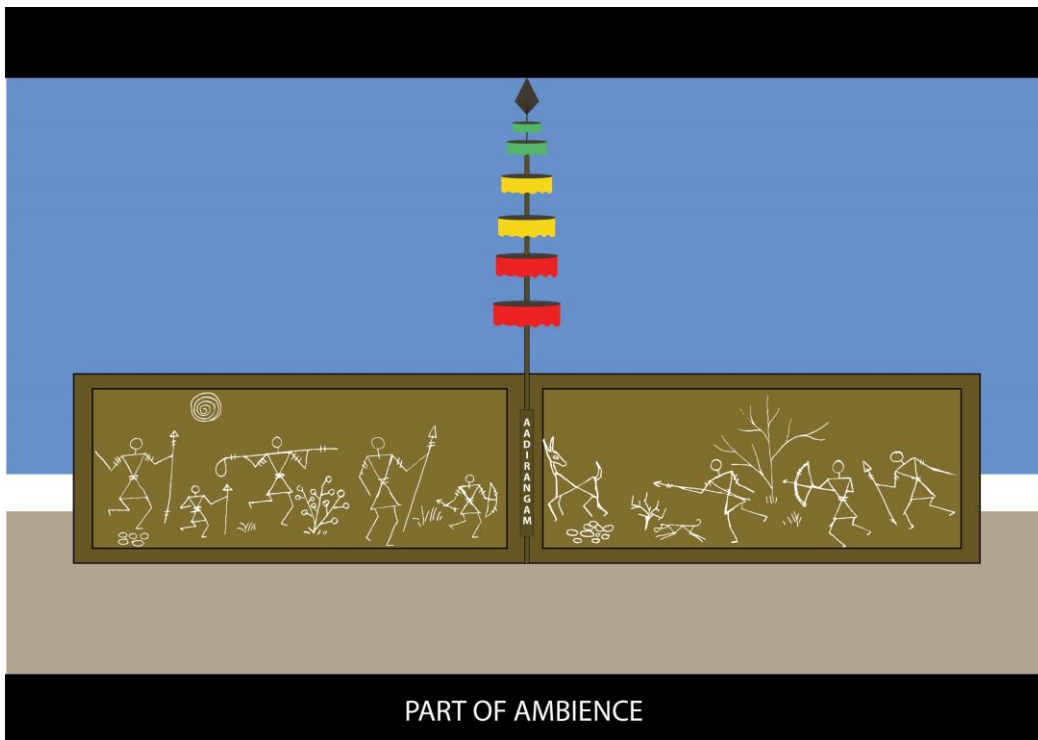
- a. Platform – 4 X 10 X 2 ft
- b. Peacock Peace – 8 X 15 ft.
Peacock Images – 3D – 2 Qty – 6 ft. Height
- 2 Festival tree – 15 Qty.

- ❖ Ornaments
 - c. Paintings
 - d. Carving & lettering work

- ❖ Material
 - a. Solid basic metal structure
 - b. Water proof ply
 - c. Bamboo
 - d. Sea sand

As per Design

B) Part of Ambience-1 – 10 Qty

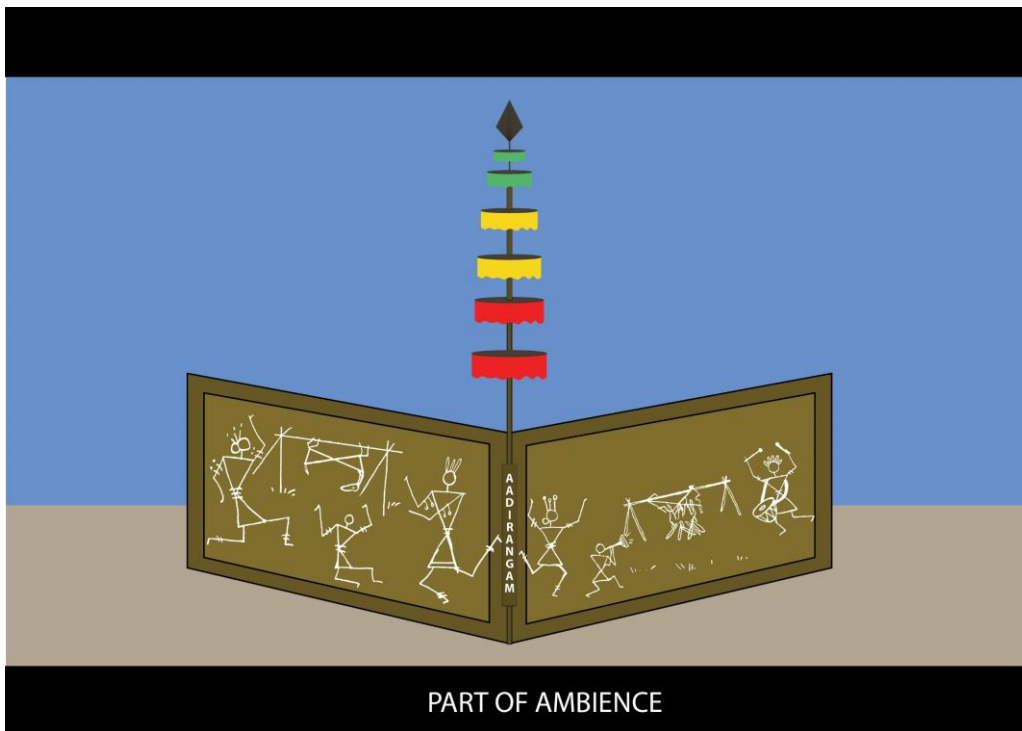


- a. Bamboo Art work Frame – 3 X 6 ft – 20 Qty.
- b. Festival Tree – 10 ft. High – 10 Qty.
- c. Festival name board 9 inch X 36 inch – 10 Qty.

- ❖ Ornaments
 - d. Paintings
 - e. Carving & lettering work

- ❖ Material
 - e. Solid basic metal structure
 - f. Water proof ply
 - g. Bamboo
 - h. Sea sand

C) Part of Ambience-2



- a. Bamboo Art work Frame – 3 X 6 ft – 20 Qty.
 - b. Festival Tree – 10 ft. Hight – 10 Qty.
 - c. Festival name board 9 inch X 36 inch – 10 Qty.
- ❖ Ornaments
- d. Paintings
 - e. Carving & lettering work
- ❖ Material
- i. Solid basic metal structure
 - j. Water proof ply
 - k. Bamboo
 - l. Sea sand

C. Central Ambience Tree and Lamp



- a. Tree Metal structure
- b. Heavy thik cloth masking
- c. Internal Lights
- d. Lamp – 6 Inch Diameter top X 10 inch Diameter bottom X 3 ft. Hight – 100 Qty.
- e. Tribal Dance form Name Belt – 6 inch X 18 Inch – 100 Qty.
- f. Lamp With Light